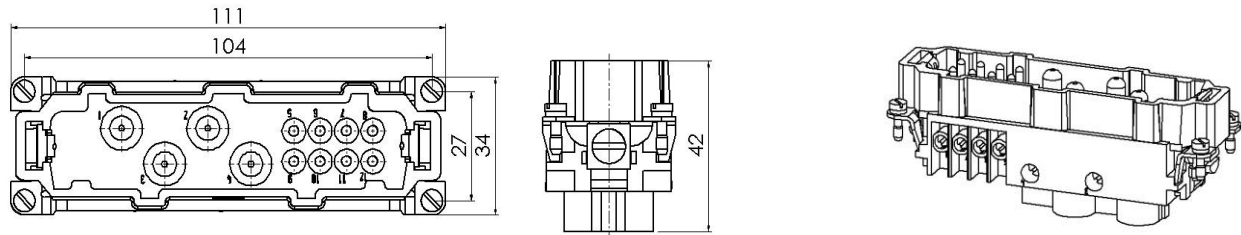


HK Series, Screw connection, 4/8 pin, Male insert



Typecode **HK-004/8-M**
 ID **1 007 03 0000103**

Technical Data

Product Properties

Series	HK
Mating with	H24B
Connection mode	Screw connection
Gender	Male
Rated voltage (power contacts)	830 V
Rated current (power contacts)	80 A
Rated voltage (control contacts)	400 V
Rated current (control contacts)	16 A
Rated impulse voltage (power contacts)	8 Kv
Rated impulse voltage (control contacts)	6 kV
Number of pins	12
Core cross-section/Clamping ability (power contacts)	1.5 ~ 16 mm ² / 16 AWG~6 AWG
Core cross-section/Clamping ability (control contacts)	1.0 ~ 2.5 mm ² / 18 AWG~14 AWG
Grounding conductor	Yes
Pollution degree	3
Insulation resistance	≥ 10 ¹⁰ Ω
Temperature range	-40 °C ~ +125 °C
Standard	EN 60664-1, IEC 61984

Insert

Material	PC
Colour	Gray (RAL 7032)

Commercial data

Weight	0.145 kg
Packaging unit	5 pcs
Country of origin	CN

Features

- Power and control contacts
- High quality engineering plastics
- Screw connection
- ≥ 500 Mating cycles
- Approval: CE, UL
- RoHS-compliant

*这里所列的是设计数据，有关产品的变更不在此做说明，未尽事宜请联系客服。用户有责任验证功能、符合适用的法律和指令以及在特定应用中的电气安全。